



Table of Contents

Introduction	Vision	Mission	Our Services
Values	Responsibility	Methodology	



Introduction

- We operate in the world of design, spanning geographical boundaries.
- Our focus lies in the balance between architectural engineering factors.
- Our goal is to be a leading force, fostering creativity in modern, innovative architectural design.
- This commitment is a key part of our strategic approach, grounded in scientific excellence.

Vision

We aspire to become pioneers in shaping architectural design, enriching it with excellence. Our approach is grounded in customer-centric solutions, utilizing clear foundations and modern design concepts to meet their needs with realism and innovation.

Mission

- Our mission is to advance the field of design for society as a whole. We achieve this by meeting the latest specifications and standards while striving to exceed design requirements at the highest levels.
- Through our consistent and effective work methods, we aim to build credibility and confidence.
- Ultimately, our goal is to create a world that reflects your unique style.

Values

At ARIS ENGINEERING CONSULTANTS , our values are deeply rooted in our personal beliefs, societal morals, and the ethics of Islam.

We are committed to delivering top-quality results and pursuing perfection in every aspect of our business.

Our actions are guided by the belief that God favors those who excel in their work, aligning with the teachings of the Prophet.



Priority to customer
needs



Scientific excellence
and experience



Investment in
human capital



Trusting
relationships with
customers



Entrepreneurial
inventiveness



Corporate social
responsibility

Responsibility

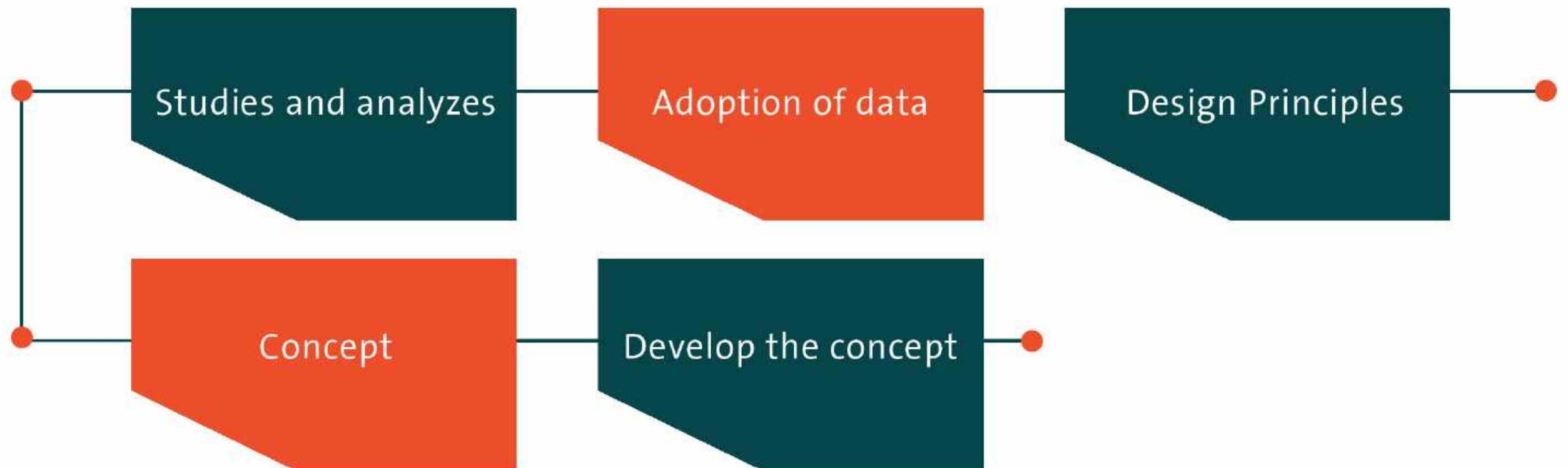
At ARIS ENGINEERING CONSULTANTS, we hold a deep commitment to fulfilling our ecological and social responsibilities. We recognize the profound impact that our actions can have on the environment and society as a whole.

Our dedication to these responsibilities is unwavering. We meticulously ensure that all our processes are not only environmentally compatible but also adhere to the highest standards of sustainability. We believe in going beyond compliance, striving for excellence in environmental stewardship.

Moreover, our social responsibilities extend to fostering positive relationships within our communities and promoting ethical business practices. We actively engage in initiatives that contribute to the betterment of society, emphasizing inclusivity, diversity, and corporate social responsibility.

In summary, our responsibility is a core part of our identity, and we are committed to conducting our business in a manner that not only satisfies the demands and expectations of our valued customers but also leaves a positive and lasting impact on the world we inhabit.

Methodology





Our Services



- We are a Saudi based Engineering Consultation office that involves in all aspects of architecture landscaping, educational and commercial designs plus various engineering services and consultations.



Programming



Architecture



M.E.P
Engineering



Planning & Urban
Design



Civil / Structural
Engineering



Interior Design



Quality
Assessment



Project
Management



Supervision & Site
Monitoring



Branding

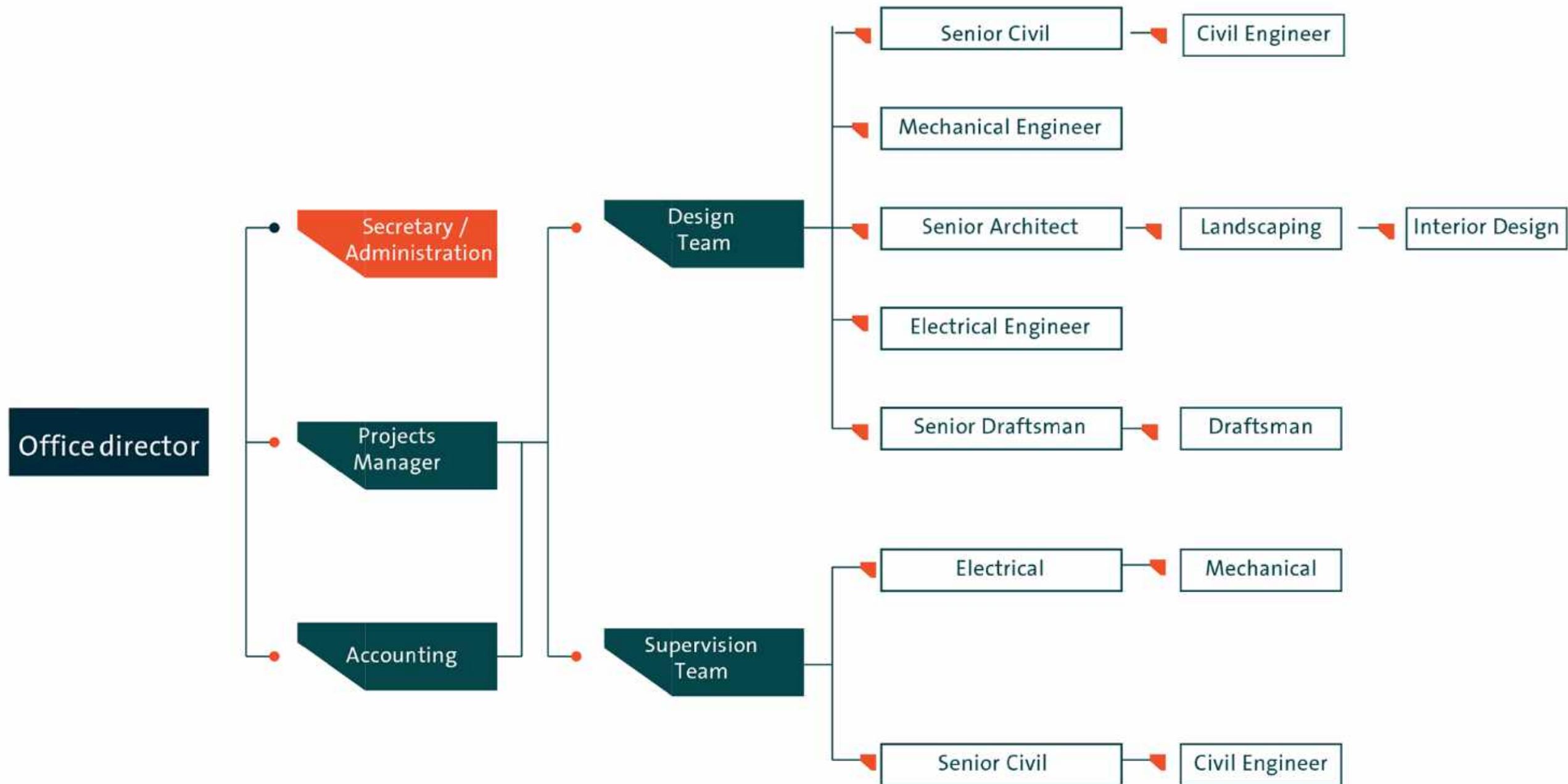


Special Studies



Graphic Design

Organizational Chart





Quality Policy

- At ARIS ENGINEERING CONSULTANTS, our unwavering commitment is to continually enhance customer satisfaction by improving the quality of our products and services. Our dedicated staff and management consistently deliver high-quality solutions that meet and exceed customer expectations.

- Our commitment to excellence is exemplified by our ISO 9001:2015 Certification earned in 2018. We achieve this by .

01

Ensuring timely delivery of products in the right quantity every time

02

Continuously updating our technical competence

03

Enhancing the expertise of our team through regular training

04

Consistently reviewing and upgrading our systems to maintain the highest standards



CERTIFICATE

Management system as per
ISO 9001 : 2015

The Certification Body TÜV Middle East hereby confirms as a result of the audit, assessment and certification decision according to ISO/IEC 17021-1:2015, that the organization

Aris Engineering Consultants
Abu Bakr Street, Al Faisaliah32271
Dammam
Kingdom of Saudi Arabia



operates a management system in accordance with the requirements of ISO 9001 : 2015 and will be assessed through periodic surveillance audits for conformity within the validity of the certificate

Scope

Engineering Services

Certificate Registration No. IAS 01 2100187
Audit Report No. 8000 0418

Valid from 26-01-2022
Valid until 25-01-2025

Certification Body
TÜV Middle East

Abu Dhabi, 26-01-2022

TÜV Middle East, Mezzanine Floor, Danat Tower A, Airport Road, P.O. Box 46030, Abu Dhabi, UAE

www.tuvme.com



Work EXPERIENCES

(EXECUTED PROJECTS)





RIMA COMPOUND

PROJECT TYPE
DESIGN & SUPERVISION

LOCATION
Al Khoubar



RIMA COMPOUND

PROJECT TYPE
DESIGN & SUPERVISION

LOCATION
Al Khoubar



▀ Private Mosque

PROJECT TYPE
DESIGN & SUPERVISION

LOCATION
Al Khoubar



▀ Private Mosque

PROJECT TYPE
DESIGN & SUPERVISION

LOCATION
Al Khoubar



TSM MALL

PROJECT TYPE
DESIGN & SUPERVISION

LOCATION
Al Khoubar



 **TSM MALL**

PROJECT TYPE
DESIGN & SUPERVISION

LOCATION
Al Khoubar



 **TSC MALL**

PROJECT TYPE
DESIGN & SUPERVISION

LOCATION
Al Khoubar



 **TSC MALL**

PROJECT TYPE
DESIGN & SUPERVISION

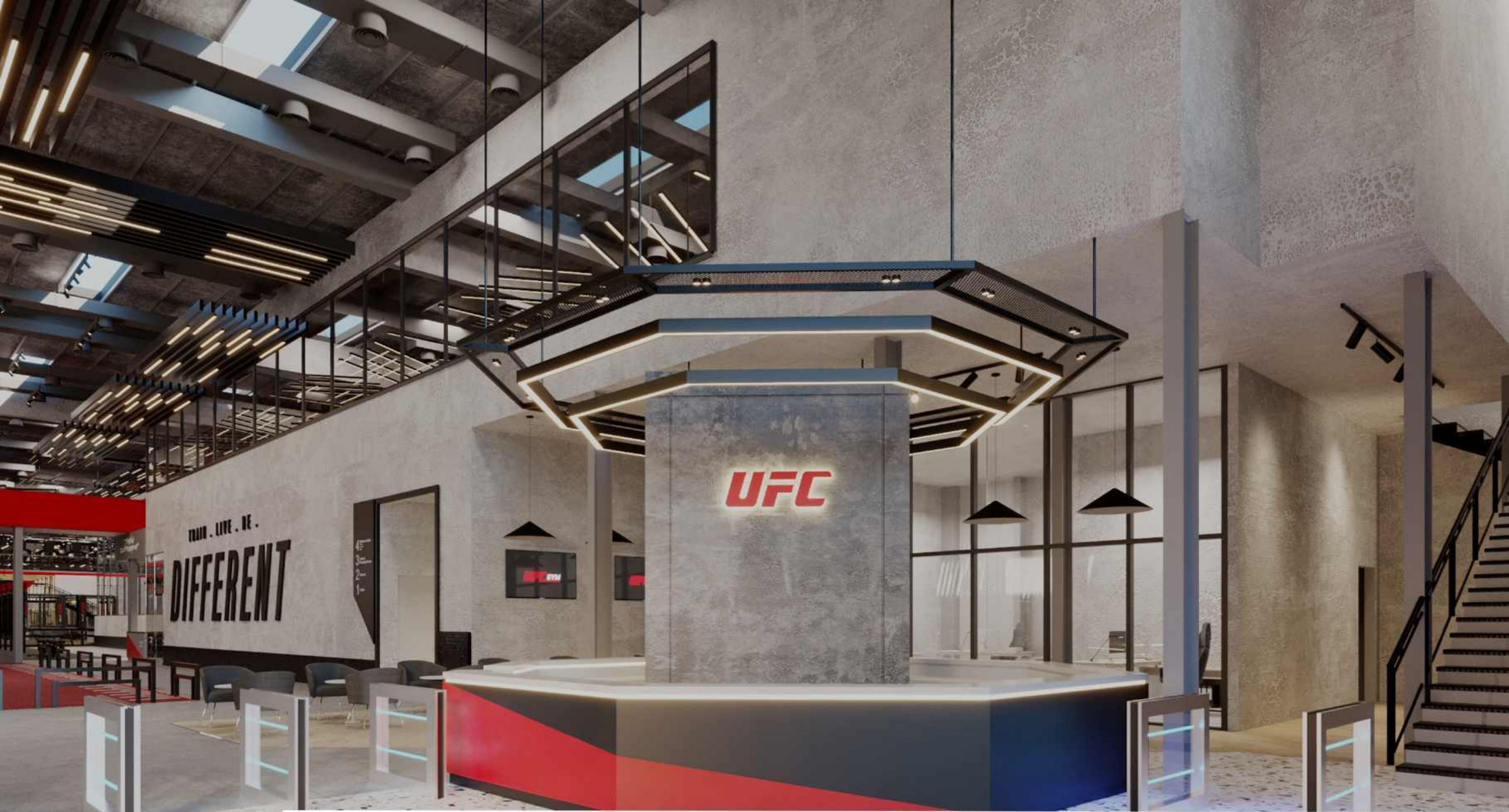
LOCATION
Al Khoubar



UFC GYM

PROJECT TYPE
Project Management & Supervision

LOCATION
Riyadh



UFC GYM

PROJECT TYPE
Project Management & Supervision

LOCATION
Riyadh



THE WATERWAY MALL

PROJECT TYPE

Project Management & Supervision

LOCATION

Al-Ahsa



THE WATER WAY MALL

PROJECT TYPE

Project Management & Supervision

LOCATION

Al-Ahsa



◀ Abha Avenue

PROJECT TYPE

Project Management & Supervision

LOCATION

Abha



COVENT GARDEN MALL

PROJECT TYPE
DESIGN & SUPERVISION

LOCATION
DAMMAM

30



COVENT GARDEN MALL

PROJECT TYPE
DESIGN & SUPERVISION

LOCATION
DAMMAM



TASKEEN COMPOUND

PROJECT TYPE
DESIGN & SUPERVISION

LOCATION
Al Khoubar



◀ TASKEEN COMPOUND

PROJECT TYPE
DESIGN & SUPERVISION

LOCATION
Al Khoubar



◀ AL-Ma'athar Villas

PROJECT TYPE
Project Management & Supervision

LOCATION
Riyadh



CORDOBA Villas

PROJECT TYPE
Project Management & Supervision

LOCATION
Riyadh



◀ MIRAMARE Villas

PROJECT TYPE
Project Management & Supervision

LOCATION
Al Khoubar



THE WAVES Mall

PROJECT TYPE
Project Management & Supervision

LOCATION
Al Khoubar



THE WAVES Mall

PROJECT TYPE
Project Management & Supervision

LOCATION
Al Khoubar



▶ PURE GYM

PROJECT TYPE
Project Management & Supervision

LOCATION
All regions of The Kingdom



◀ **9ROUND**

PROJECT TYPE
DESIGN & SUPERVISION

LOCATION
RIYADH

40



▀ ASEER MALL

PROJECT TYPE
SUPERVISION & PROJECT MANAGMENT

LOCATION
ABHA



ASER MALL

PROJECT TYPE
SUPERVISION & PROJECT MANAGMENT

LOCATION
ABHA

Why ARIS



Ideal one point Control
center for complete
project



Highly quailed team at
client's disposal



Cost
optimization



Confidentiality &
secrecy of Client's
data



Years of experience -
well developed
Vendor list



Innovative engineering
solutions with
value-added expertise



Strategic access to
Technology Licensors
and Contracting
companies



Flexible,
Client-conscious
approach



Quality-certified
systems and
standards



Safety and
environmental
considerations



Commitment
to cost and
time schedules



جبل الظهران
Jabal AlDhahran



د. سليمان الحبيب
DR SULAIMAN AL HABIB
المجموعة الطبية medical group



القحطاني القابضة
Al Qahtani Holding



سينومي
cenomi

شركة موان العقارية
Mawan Real Estate Co.



وزارة الشؤون
البلدية والقروية
Ministry of Municipal & Rural Affairs



وزارة الشؤون البلدية
والقروية والإسكان
Ministry of Municipal Rural Affairs & Housing



مركز خدمات المطورين
DEVELOPERS SERVICES CENTER



مدن MODON
الهيئة السعودية للمدن المتكاملة ومناطق التنمية
Saudi Authority for Industrial Cities and Townships Development



Zamil
Group

شركة تنامي العربية
tanami arabia company



أرامكو السعودية
Saudi Aramco



شركة إبراهيم محمد الهانع وإخوانه
Ebrahim M. Al-Mana & Brothers Co.
(مساهمة مغلقة - Closed Joint Stock)



Closing

- At ARIS ENGINEERING CONSULTANTS, we are dedicated to transforming your visions into reality .
- Our commitment to excellence, innovation, and client-centric solutions is unwavering .
We invite you to embark on a journey of collaboration and creativity with us .
- Let's shape a world that reflects your unique style and meets the highest standards .
- Contact us today to explore how we can bring your projects to life and exceed your expectations .

We design thoughtful livable spaces



Thank You

P. O. Box 7745 Abu Bakr Al Sidiq. Al Faisaliyah - Ad Dammam 32271 - 2351KSA

C.R. 2050106785

T.+966 13 811 1014

www.aris.sa